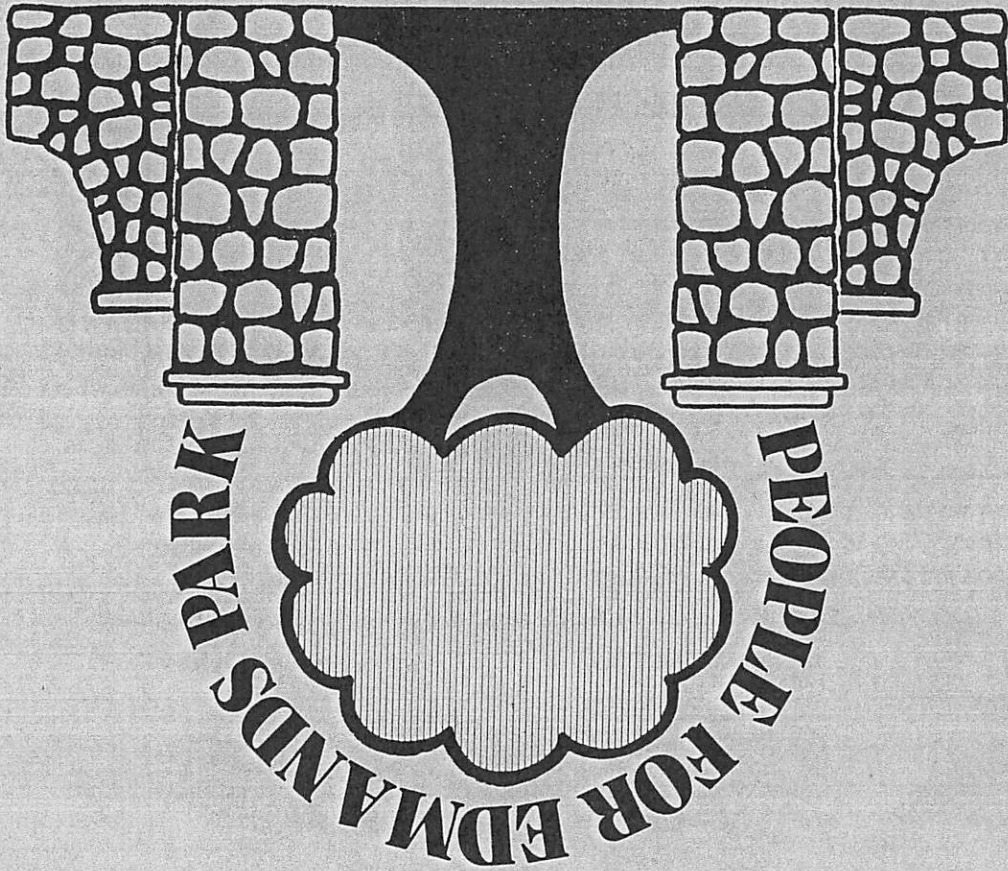


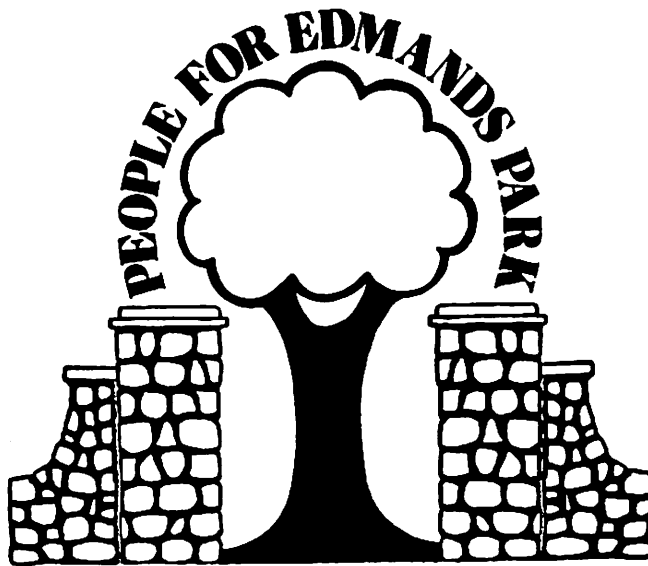
People for Edmands Park is a group of the Park's neighbors and others in the City who are interested in restoring the Park to its original state as a place of beauty and rest.



Edmands Park

Handed out at first public meeting held
March 7th, 1979, at Cabot Street 7:30-9:30 pm.

Newson File



Edmands Park (also known as the Cabot Woods) is a 33-acre natural area donated to the City of Newton in 1913 by the estate of J. Willey Edmands. It is one of the few real open spaces remaining in our community.

Its present condition can best be described as a combination of natural features and public neglect, as well as active abuse. If this pattern continues, Edmands Park will cease to exist as a park and will be transformed into an urban eyesore.

People for Edmands Park is a group of the Park's neighbors and others in the City who are interested in restoring the Park to its original state as a place of beauty and rest. We have attempted to bring together what is known of the land's history, its geology, its wildlife, and its present status, so that we can all act together to give Edmands Park life once more; this may be its last chance.

We are just beginning. We need to inform each other of the Park's past, and of future possibilities, before Edmands is covered by an avalanche of refuse.

At our open meeting on March 7, we will ask for your ideas. We will ask you to hear and speak to those City officials and representatives whose agencies or constituencies affect Edmands Park. We will ask you to join our strong young organization and lend your energies to the renewal of this stunning piece of land.

Come and make a commitment; it can only be to your benefit.

FOR ADDITIONAL INFORMATION YOU MAY CONTACT

John and Tami Bliss	244-6495	Carol Gilson	244-1540
Sheila Brownstein	332-9880	Sam Huntington	965-5063
Bob Buxbaum	332-6548	Richard & Eleanor LeBovidge	332-2609
Bill and Ruth Dain	244-1158	Dave Peterson	965-0257

READING LIST ON EDMANDS PARK*

March 1979

Over the years various individuals and organizations in the community have taken an interest in the park. Here are some of the papers written to support their views:

Bliss, John. Proposal to Improve Edmands Park. 1974.

Suggestions to Planning Department on how to protect existing facilities and improve the park for the future, using Federal funds.

Hauser, Mark. Trees of Edmands Park. 1974. Illus.

A Newton North High School student's description of tree species found in the park.

Heyn, Helen. Background on Edmands Park. 1961.

A history of the park prepared for a League of Women Voters Study Committee. Written by one of their members, who later became a Newton Conservation Commissioner 1967-1979.

Peterson, David. Park Description & Historical Summary. 1979. Illus.

Written by a landscape architect, also a member of People for Edmands Park. This is the most recent summary of the history of the park.

Vinal, Dr. William G. Edmands Park: Report of a Survey. 1951.

Vinal advocates the need for co-operation of many city agencies in developing Edmands as a creative leisure resource. Written under the auspices of the Newton Public Schools.

*(All these materials are available at the Newton Free Library)

Continued...

NEWSPAPER ARTICLES

- "Facelifting by Special Crew"NEWTON GRAPHIC.....8/20/70, p. 2
"Clean Up"NEWTON GRAPHIC.....8/27/70, p. 2
"Board Action Hints Better Use"...NEWTON VILLAGER.....3/ 9/72
"Play Now, Skate Later".....NEWTON TIMES.....10/17/73

LEGAL ASPECTS

Copy of Deed

August 16, 1913.

Huntington, Samuel.

Summary of Edmands Park Deed 1979.

Written in terms the laymen can understand, this summary was prepared by an attorney and member of People for Edmands Park.

NEWTON CITY REPORTS

Information about the park is contained in the following city reports:

R 352 N48P, City of Newton, Public Documents, Newton Collection, Newton Free Library.

1913 - Mayor's Address, p. 8
1913 - City Engineer, p. 19

1915 - Forestry Department, p. 18 (illus.)
1915 - Forestry Department, p. 22

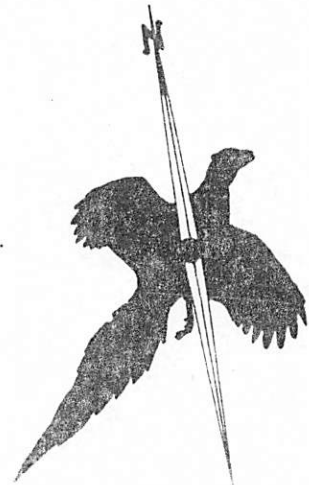
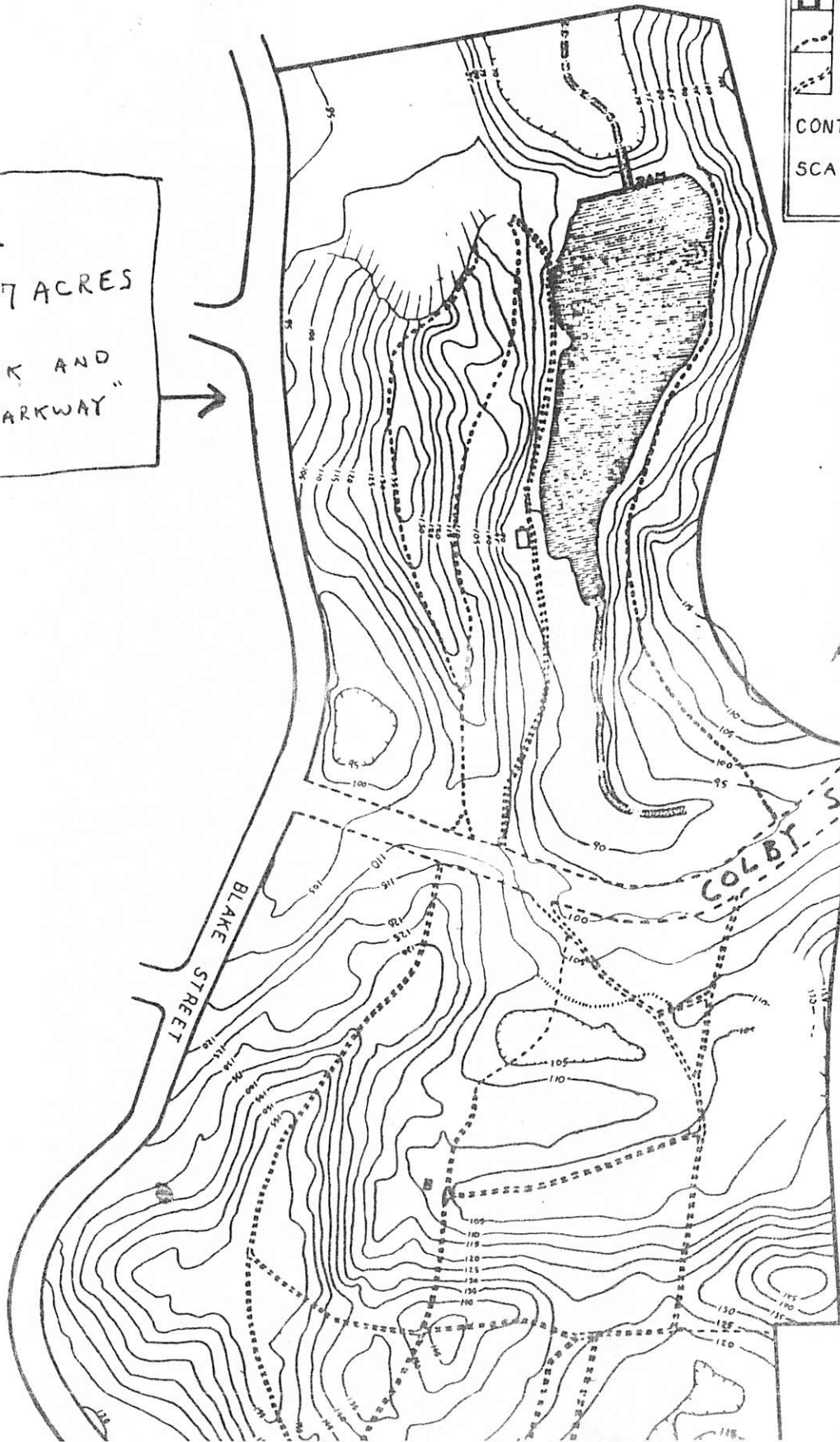
1916 - Forestry Department, p. 2 (illus.)
1916 - Forestry Department, p. 18 (illus.), p. 19.

EDMANDS PARK

NEWTONVILLE, MASSACHUSETTS

LEGEND	
	TRANSIENT POND
	INTERMITTENT STREAM
	BUILDING FOUNDATION
	FOOTPATH
	DIRT ROAD
CONTOUR INTERVAL - 5 FEET	
SCALE 1" = 200'	
1:1200	

I
12.7 ACRES
"PARK AND
"PARKWAY"



II
19.9 ACRES
"PARK AND
PLAYGROUND"